

NK-VN1600 | Female Union Both Ends

◆ **APPLICATION**

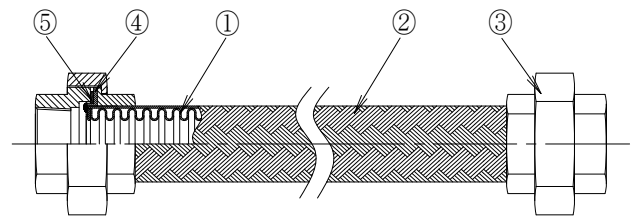
- Minimize noise and stop vibration transfer from equipment to piping.
- Allow for minor misalignments and simplify installation in cramped areas.
- Decrease strain at connections from thermal changes or movement, reducing leaks and failures.
- Enable easy disconnection for servicing or coil removal.
- Withstand high pressure and temperature in HVAC operations.

◆ **FEATURES**

- Applicable Media
Water Supply, Wastewater, Hot Water, Chilled Water, Firefighting Water.
- Working Pressure
Up to 1.6Mpa
*Higher Pressure is available on request
- Working Temperature
Up to 100 Deg. C
*Higher Temperature is available on request
- End Connection
BSPT, BSPP, NPT
*Special standard is available on request



STRUCTURE		
No.	Part name	Material
1	Tube	SS304 . SS316L
2	Braid	Stainless Steel
3	Union fittings	FCMB . Carbon Steel . Stainless Steel
4	Union collar	Stainless Steel
5	Gasket	Non asbestos



Unit (mm)

SPECIFICATION							
Size		Min. Bending Radius	300 OAL		500 OAL		Min. OAL
DN	Inch		Effective Length	Lateral Movement	Effective Length	Lateral Movement	
DN15	1/2	50	217	52	416	123	200
DN20	3/4	65	202	33	402	123	200
DN25	1	80	182	23	382	102	200
DN32	1 1/4	100	162	13	362	65	200
DN40	1 1/2	120	144	9	344	52	200
DN50	2	140	114	4	314	35	200

Calculated at 1.6 MPa and 40°C

INSTALLATION GUIDE

- Metal flexible hoses should be bent and used only to the radius and lateral movement specified in their guidelines to prevent fatigue and failure.
- Twisting of metal flexible hoses should be avoided while installing and using as well.
- For guidance on dynamic movement, please contact us.

NOTES

- The information in this catalog may be subject to updates or modifications without prior notice.
- Special lengths are available on request.

Scan for more information



NK-VN2100 | Female Swivel Union Both Ends

(For High Pressure Type)

◆ **APPLICATION**

- Minimize noise and stop vibration transfer from equipment to piping.
- Allow for minor misalignments and simplify installation in cramped areas.
- Decrease strain at connections from thermal changes or movement, reducing leaks and failures.
- Enable easy disconnection for servicing or coil removal.
- Withstand high pressure and temperature in HVAC operations.

◆ **FEATURES**

• Applicable Media
Water Supply, Wastewater, Hot Water, Chilled Water, Firefighting Water.

• Working Pressure

Up to 2.5Mpa

*Higher Pressure is available on request

• Working Temperature

Up to 450 Deg. C

*Disregard working pressure

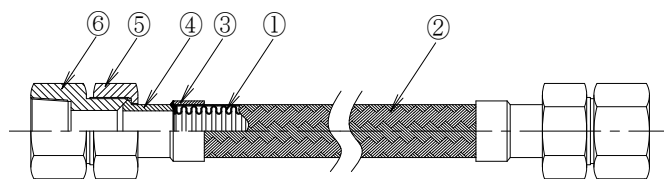
• End Connection

BSPT, BSPP, NPT

*Special standard is available on request



STRUCTURE		
No.	Part name	Material
1	Tube	SS304 . SS316L
2	Braid	Stainless Steel
3	Braid sleeve	Stainless Steel
4	Sleeve	Carbon Steel . Stainless Steel
5	Nuts	Carbon Steel . Stainless Steel
6	Female adapter	Carbon Steel . Stainless Steel



Unit (mm)

SPECIFICATION							
Size		Min. Bending Radius	300 OAL		500 OAL		Min. OAL
DN	Inch		Effective Length	Lateral Movement	Effective Length	Lateral Movement	
DN15	1/2	50	155	26	355	123	200
DN20	3/4	65	146	17	346	100	200
DN25	1	80	120	10	320	71	300
DN32	1 1/4	100	104	5	304	46	300
DN40	1 1/2	120	89	3	289	35	300
DN50	2	140	61	1	261	23	300

Calculated at 1.6 MPa and 40°C

INSTALLATION GUIDE

- Metal flexible hoses should be bent and used only to the radius and lateral movement specified in their guidelines to prevent fatigue and failure.
- Twisting of metal flexible hoses should be avoided while installing and using as well.
- For guidance on dynamic movement, please contact us.

NOTES

- The information in this catalog may be subject to updates or modifications without prior notice.
- Special lengths are available on request.

Scan for more information



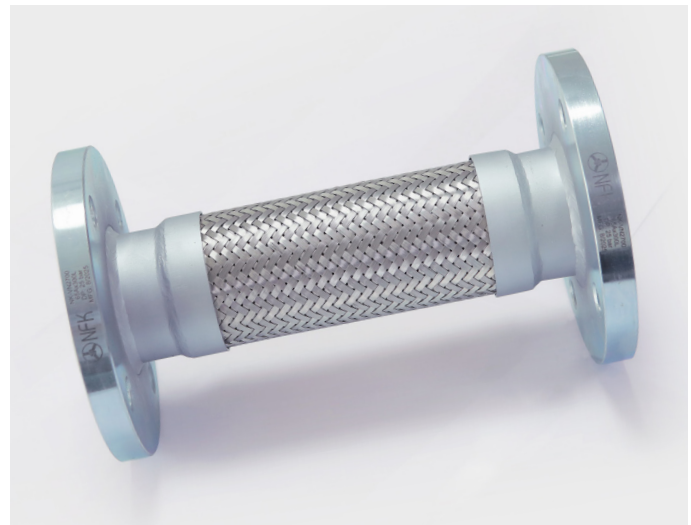
NK-VN2700 | Fixed Flange Both Ends (Butt Welding Type)

◆ **APPLICATION**

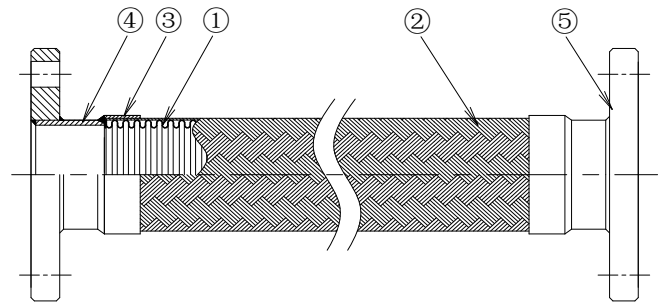
- Vibration Isolation and Noise Reducing of Pump, Chiller...etc
- Misalignment Compensation
- Ease of Maintenance and Replacement
- Decrease strain at connections from thermal changes or movement, reducing leaks and failures.
- High Pressure and Temperature Resistance

◆ **FEATURES**

- Applicable Media
Water Supply, Wastewater, Hot Water, Chilled Water, Firefighting Water.
- Working Pressure
Up to 2.5Mpa
*Higher Pressure is available on request
- Working Temperature
Up to 450 Deg. C
*Disregard working pressure
- End Connection
JIS, DIN, BS, ASME
*Special standard is available on request



STRUCTURE		
No.	Part name	Material
1	Tube	SS304 . SS316L
2	Braid	Stainless Steel
3	Braid sleeve	Stainless Steel
4	End Pipe	Carbon Steel . Stainless Steel
5	Fixed Flange	Carbon Steel . Stainless Steel



Unit (mm)

SPECIFICATION							
Size		Min. Bending Radius	300 OAL		500 OAL		Min. OAL
DN	Inch		Effective Length	Lateral Movement	Effective Length	Lateral Movement	
DN50	2	140	154	8	354	44	200
DN65	2 1/2	220	154	7	354	37	200
DN80	3	280	150	7	350	37	200
DN100	4	350	150	6	350	31	200
DN125	5	380	144	4	344	24	300
DN150	6	440	144	3	344	22	300
DN200	8	620	110	2	310	15	300
DN250	10	860	110	1	310	11	300
DN300	12	900	-	-	310	9	400

Calculated at 1.6 MPa and 40°C

INSTALLATION GUIDE

- Metal flexible hoses should be bent and used only to the radius and lateral movement specified in their guidelines to prevent fatigue and failure.
- Twisting of metal flexible hoses should be avoided while installing and using as well.
- For guidance on dynamic movement, please contact us.

NOTES

- The information in this catalog may be subject to updates or modifications without prior notice.
- Special lengths are available on request.
- Available in sizes up to DN600 upon request.

Scan for more information



NK-VN3200 Fixed Flange Both Ends

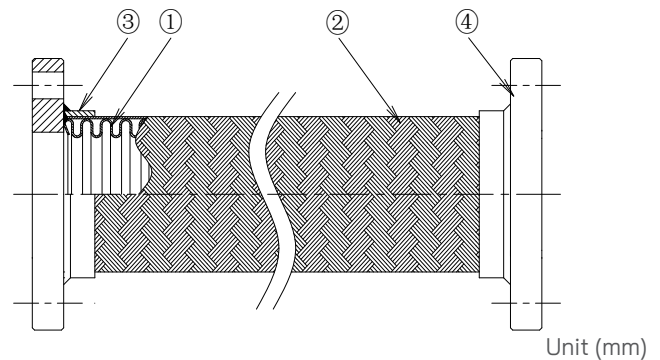
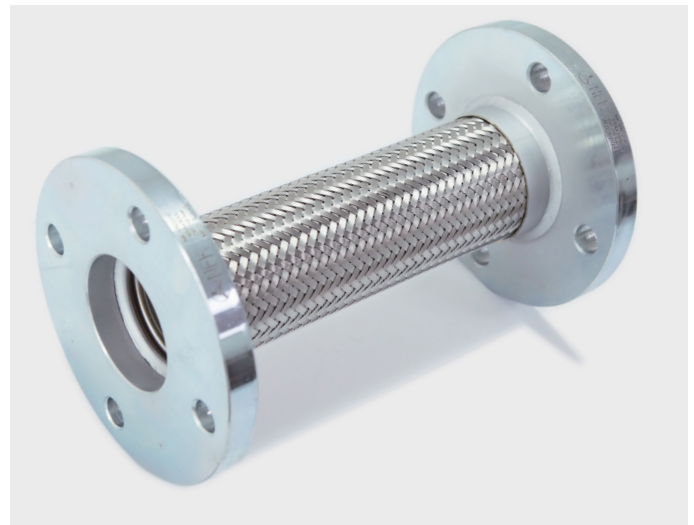
(Fillet Welding Type)

◆ **APPLICATION**

- Vibration Isolation and Noise Reducing of Pump, Chiller...etc
- Misalignment Compensation
- Decrease strain at connections from thermal changes or movement, reducing leaks and failures.
- High Pressure and Temperature Resistance
- Ease of Maintenance and Replacement

◆ **FEATURES**

- Applicable Media
Water Supply, Wastewater, Hot Water, Chilled Water, Firefighting Water.
- Working Pressure
Up to 1.6Mpa
*Higher Pressure is available on request
- Working Temperature
Up to 450 Deg. C
*Disregard working pressure
- End Connection
JIS, DIN, BS, ASME
*Special standard is available on request



STRUCTURE		
No.	Part name	Material
1	Tube	SS304 . SS316L
2	Braid	Stainless Steel
3	Braid sleeve	Stainless Steel
4	Fixed flange	Carbon Steel . Stainless Steel

SPECIFICATION							
Size		Min. Bending Radius	300 OAL		500 OAL		Min. OAL
DN	Inch		Effective Length	Lateral Movement	Effective Length	Lateral Movement	
DN50	2	140	300	16	500	60	200
DN65	2 1/2	220	300	13	500	50	200
DN80	3	280	300	13	500	50	200
DN100	4	350	300	12	500	45	200
DN125	5	380	300	9	500	33	250
DN150	6	440	300	7	500	31	250
DN200	8	620	300	7	500	26	250
DN250	10	860	300	4	500	19	300
DN300	12	900	300	4	500	16	300

Calculated at 1.6 MPa and 40°C

INSTALLATION GUIDE

- Metal flexible hoses should be bent and used only to the radius and lateral movement specified in their guidelines to prevent fatigue and failure.
- Twisting of metal flexible hoses should be avoided while installing and using as well.
- For guidance on dynamic movement, please contact us.

NOTES

- The information in this catalog may be subject to updates or modifications without prior notice.
- Special lengths are available on request.
- Available in sizes up to DN600 upon request.

Scan for more information

